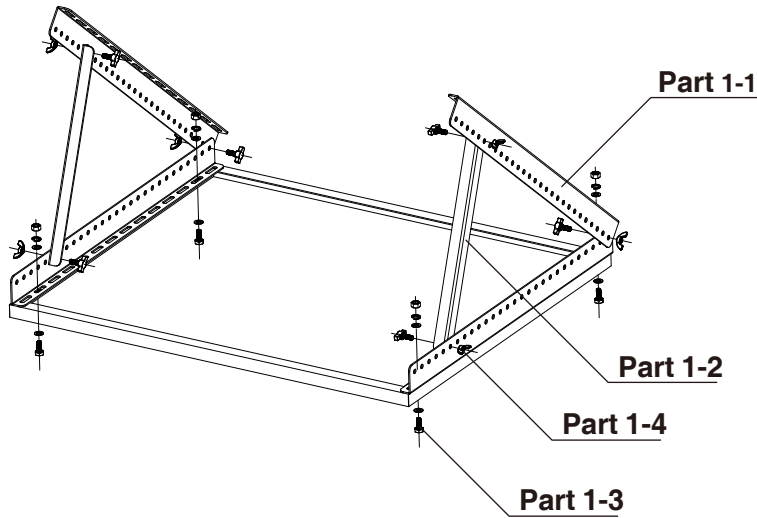


# SLB-0103 | Installation Manual

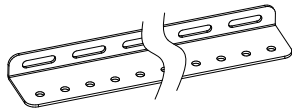
## Universal Flat Mount Bracket kit

Thank you for purchasing SOLARLAND products. SLB-0103 mounting kits are used for 45W - 180W SOLARLAND panels at an tilt angle from 20°--- 90°

### Components And Parts

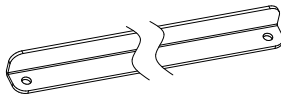


### Part



#### Part 1-1

Component	Fixed Bracket
Material	6063AL
Quantity	4



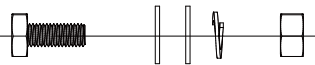
#### Part 1-2

Component	Tilt Arm
Material	6063AL
Quantity	2



#### Part 1-3-1

Component	Module Bolt(M8)
Material	AISI304
Quantity	4



#### Part 1-3-2

Component	Module Bolt(M6)
Material	AISI304
Quantity	4



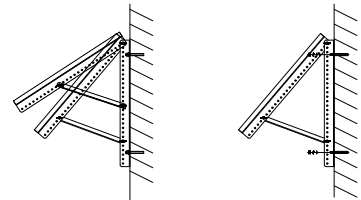
#### Part 1-4

Component	Butterfly Bolt
Material	AISI304
Quantity	6

Assemble the components and parts together according to the left picture. Attached the PV module to the mounting brackets using M8 screw/bolt supplied in the pack. Be careful of the bolt, flat washer, spring wash and nut sequences. Find suitable holes on the panel frame and tighten the brackets on it.

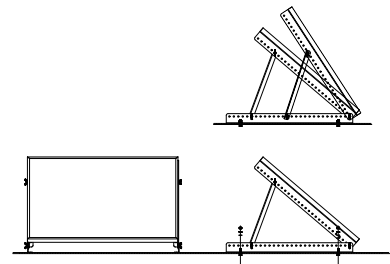
#### Wall Mounts:

Drill suitable holes in the mounting surface and embed the M8 expansion bolt into the wall, tighten the brackets along with the panel onto the expansion bolt, adjust the angle you need, seal the mounting holes for any water penetration.



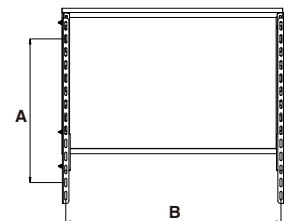
#### RV Mounts:

Drill suitable holes in the mounting surface, tighten the brackets with the M8 bolt; adjust the angle you need, seal the mounting holes for any water penetration.



#### Caution:

- Apply some lubricant on the screw/bolts before installation.
- All Wall, roof, RV mounts not included.



- Drill holes according to the length of A and B.